

Advancing the

# PAST-PRODUCING PRINCE SILVER PROJECT

In Nevada



April 2026



CSE: PRNC OTCQB:PRNCF FRA: T130

# FORWARD LOOKING STATEMENTS

Certain statements in this presentation are forward-looking statements, including with respect to future plans, and other matters. Forward-looking statements consist of statements that are not purely historical, including any statements regarding beliefs, plans, expectations or intentions regarding the future. Such information can generally be identified by the use of forwarding-looking wording such as “may”, “expect”, “estimate”, “anticipate”, “intend”, “believe” and “continue” or the negative thereof or similar variations. Some of the specific forward-looking information in this presentation includes, but is not limited to, statements with respect to: the timing of the resumption of trading of Shares on the CSE and the trading symbol of the Shares on the CSE. The reader is cautioned that assumptions used in the preparation of any forward-looking information may prove to be incorrect. Events or circumstances may cause actual results to differ materially from those predicted, as a result of numerous known and unknown risks, uncertainties, and other factors, many of which are beyond the control of the Company, including but not limited to, business, economic and capital market conditions, the ability to manage operating expenses, and dependence on key personnel. Such statements and information are based on numerous assumptions regarding present and future business strategies and the environment in which the Company will operate in the future, anticipated costs, and the ability to achieve goals. Factors that could cause the actual results to differ materially from those in forward-looking statements include, the continued availability of capital and financing, litigation, failure of counterparties to perform their contractual obligations, loss of key employees and consultants, and general economic, market or business conditions. Forward-looking statements contained in this presentation are expressly qualified by this cautionary statement. The reader is cautioned not to place undue reliance on any forward-looking information.

The forward-looking statements contained in this presentation are made as of the date of this presentation. Except as required by law, the Company disclaims any intention and assumes no obligation to update or revise any forward-looking statements, whether as a result of new information, future events or otherwise.

# WHY PRINCE SILVER & WHY NOW?

## 1. PROVEN NEVADA SILVER DISTRICT - *Not Early-Stage Exploration*

- Large-scale past-producing system with historical underground production and near surface mineralization with open-pit potential.

## 2. FULLY-FUNDED ONGOING DRILLING - *News flow = Near Term Catalysts*

- 9,000 m RC program underway with 2 drill rigs and now financed for 2<sup>nd</sup> phase in 2026, with a steady stream of results expected from January to May 2026.

## 3. CLEAR PATH TO MAIDEN MINERAL RESOURCE ESTIMATE - *Plenty of Exploration Upside*

- Drilling is designed to validate an **Exploration Target** of 23-45Mt (calculated using JORC standards), reported in unpublished historic internal report by the previous project operator in 2024.\*

## 4. LEVERAGED TO US CRITICAL MINERALS - *Ag, Mn, Zn, Pb and Cu are on 2025 USGS list*

- *Several recent examples of junior miners receiving US government backed funding and fast-tracking of permitting for critical mineral projects with demonstrated economic viability*

**EARLY ENTRY AHEAD OF A POTENTIAL EXPLORATION-TO-RESOURCE RE-RATING**

\*Disclaimer: Readers are cautioned that the Exploration Target is not an “inferred”, “indicated” or “measured” mineral resource compliant with National Instrument 43-101 (“NI 43-101”). The Exploration Target has been determined based upon 129 historic drill holes totalling 16,606 meters, historic production records including mine level plans and 3D modelling of mineralization and geology. The potential quantity and grade of the Exploration Target is conceptual in nature. There has been insufficient exploration to define a mineral resource and, it is uncertain if further exploration will result in the Exploration Target being delineated as a mineral resource. Source: OmniGeoX Exploration Consultants, April 2024, copy available on the Company’s web site – [www.princesilvercorp.com](http://www.princesilvercorp.com)

# PRINCE SILVER PROJECT: “MODERN BULK CRD OPPORTUNITY”

## LOCATION:

Lincoln County, Nevada (240km north of Las Vegas)

## PROVEN MINING DISTRICT:

Between 1912-1964 the Pioche Region produced Ag, Au, Mn, Pb and Zn<sup>(1)</sup> which at recent spot prices would be valued at over **\$5.0 Billion**<sup>(2)</sup>.

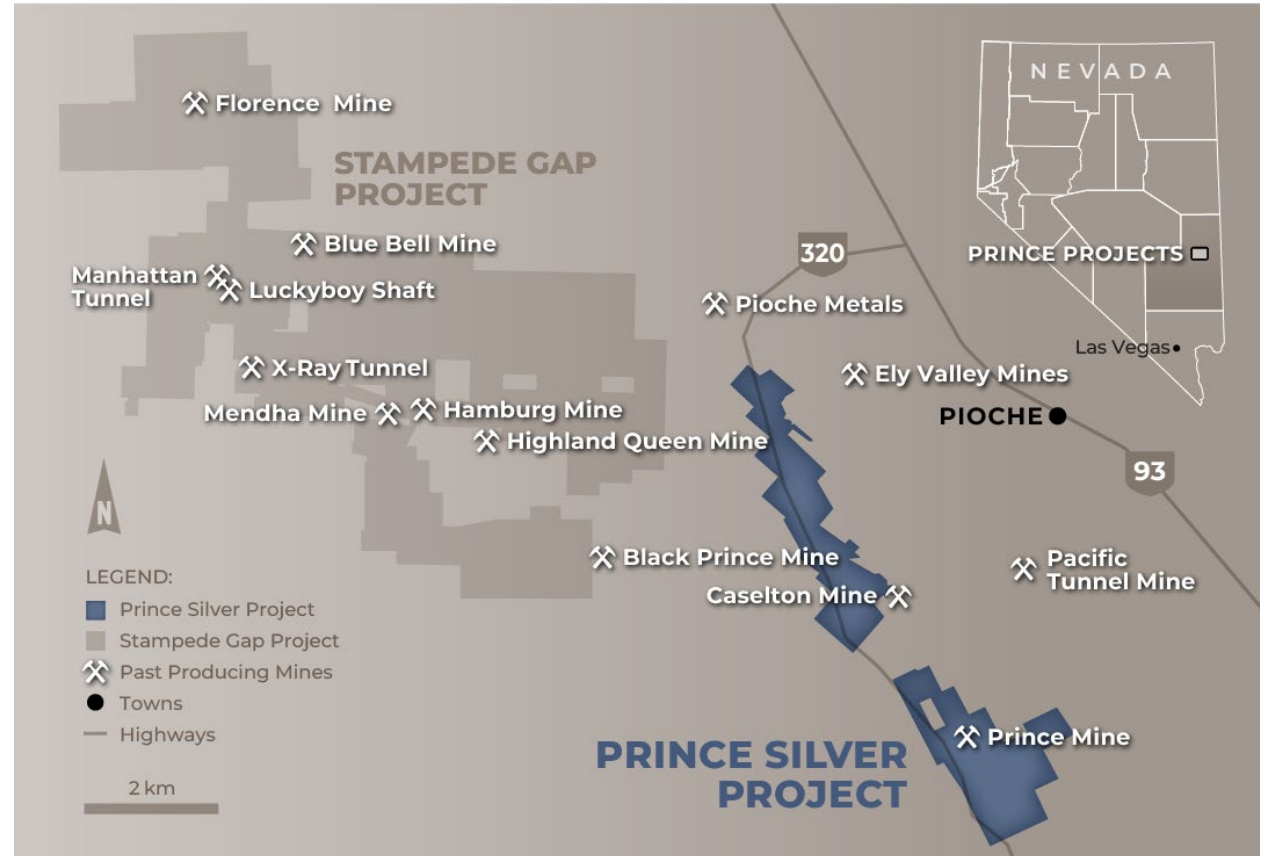
## GEOLOGICAL DEPOSIT TYPE:

Bedded Carbonate Replacement Deposit (“CRD”)  
*(Known for size, continuity and metal diversity)*

## METALS PRESENT:

Ag\*, Zn\*, Pb\*, Mn\* and Au<sup>(3)</sup>

*\*Included in USGS Critical Minerals List for 2025*



**DRILLING NOW UNDERWAY – THE FIRST EXPLORATION ON THE PROJECT IN 14 YEARS**

(1) Historical production figures are derived from unpublished mining district compilations by P. Gemmill (circa 1970). Pioche District historically produced ~6.7Mt @ 135g/t Ag, 0.7g/t Au, @ 6.8% Zn, 2.9% Pb, (15.9% ZnEq<sup>3</sup>)

(2) Total historical production value calculated at the following prices in US\$ - \$77.83/oz Ag, \$3,287/Mt Zn, \$1,900/Mt Pb, \$12,635/Mt Cu, \$4,933/ oz Au as of Feb 19, 2026

(3) Gold is on the U.S. strategic metals list

# PAST PRODUCING PRINCE SILVER PROJECT

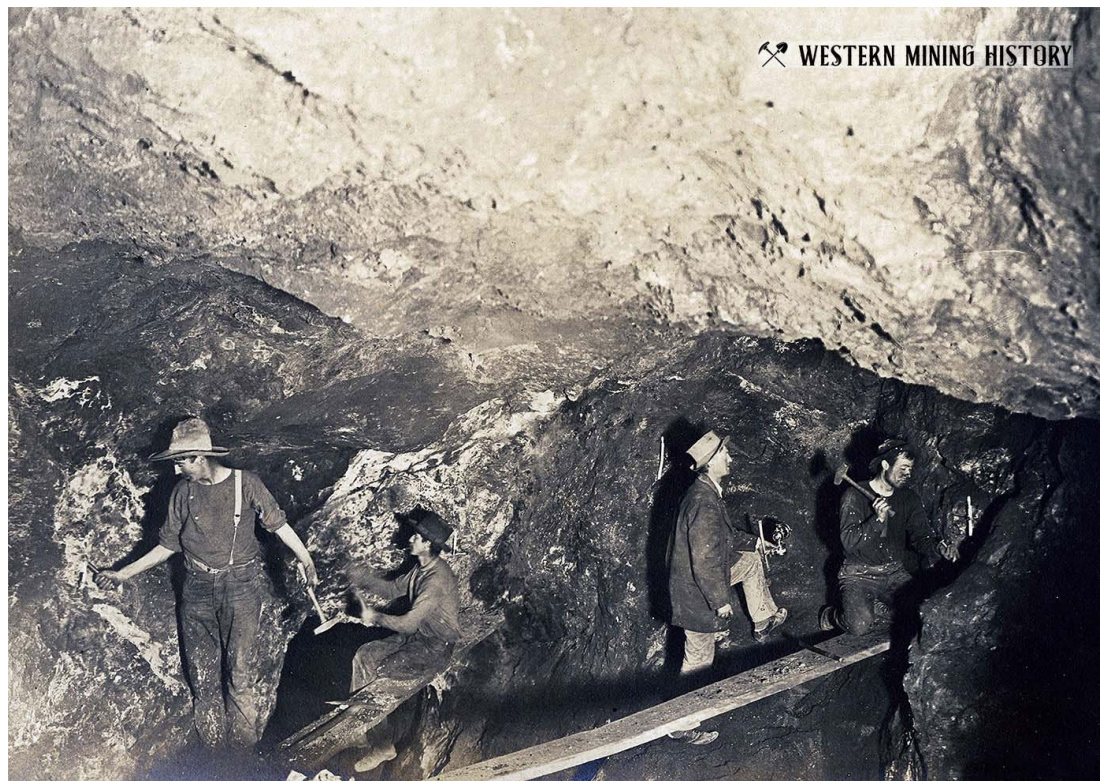


Photo from Western Mining History: Underground at Keystone Mine, Nevada, NV in 1910

## RECORDED HISTORIC PRODUCTION (1912–1949)

**1.12mt at 100 g/t Ag, 10.2% Mn, 4.5% Zn, 0.50 g/t Au<sup>(1)</sup>**, from underground mining of veins and mantos yielding **~3.6 Moz Ag, ~50 Kt Zn, ~17koz Au<sup>(1)</sup>** (Mn was not a focus during this period).

## CURRENT METAL PRICES

Historic production of Ag, Zn, Pb, and Au would be valued at nearly **US\$600 million<sup>(2)</sup>** at recent metal prices

## A PERFECT STORM

Broad lower-grade material was left largely untouched. Modern mining and recovery methods combined with current metal pricing support a complete re-evaluation of the mineralization previously considered uneconomic in early 1900s.

(1) Historical production figures are derived from unpublished mining district compilations by P. Gemmill (circa 1970)  
(2) Total historical production value calculated at the following prices in US\$ - \$77.83/oz Ag, \$3,287/Mt Zn, \$1,900/Mt Pb, \$12,635/Mt Cu, \$4,933/ oz Au as of Feb 19, 2026

**THIS DE-RISKED ASSET DESERVES A FRESH LOOK USING MODERN MINING AND HIGHER METAL PRICES**



**Surface Collapse of Historic  
Near-Surface Mined Stopes**

**Historic Prince  
Mine Headframe**

# PRINCE SILVER PROJECT: “NOT A SMALL VEIN SYSTEM”



## SHALLOW TO DEPTH CONTINUITY

- Historic mining progressed from shallow oxides into sulphides to 254 m (835 ft), demonstrating vertical continuity and scale

## BULK-MINEABLE GEOMETRY

- Multiple stacked mineralized horizons
- *Upper-oxides: Ag-Mn-Zn-Pb & Lower sulphides: Ag-Au-Zn-Pb*
- Additionally, the Pioche Shale contact hosts broad lower-grade mineralization that was largely untested until 2012.

## BACKED BY 27 YEARS OF HISTORICAL PRODUCTION

- Proven extensive mineralization and high-grade zones
- 129 historic drill holes (~16.6km) reduce exploration risk, cost, and timeline to a Mineral Resource Estimate (MRE).

CLEAR PATH TO MRE AND POTENTIAL FOR BULK TONNAGE OPEN-PIT MINING

# DRILLING UNDERWAY: NEW 2026 DRILL RESULTS

9,000 metre RC Drill Program launched in Sept. 2025

HIGHLIGHT ASSAY RESULTS FROM JAN. 13, 2026 NEWS RELEASE:

**PRC-28: EXCEPTIONAL AG AND MN GRADES (186-189 m depth)**

**1,331 g/t Ag, 14.17% Mn, 2.19% Pb, 4.45% Zn @ 3.05 m**

**PRC-27: HIGH-GRADE AU-AG WITH BASE METALS (273-276 m depth)**

**4.78 g/t Au, 355 g/t Ag, 2.69% Pb, 4.72% Zn @ 3.05 m**

**PRC-30: THICK, HIGH-QUALITY INTERVALS (201-209 m depth)**

**166.7 g/t Ag, 8.70% Mn, 0.31 g/t Au, 1.14% Zn @ 7.62 m**

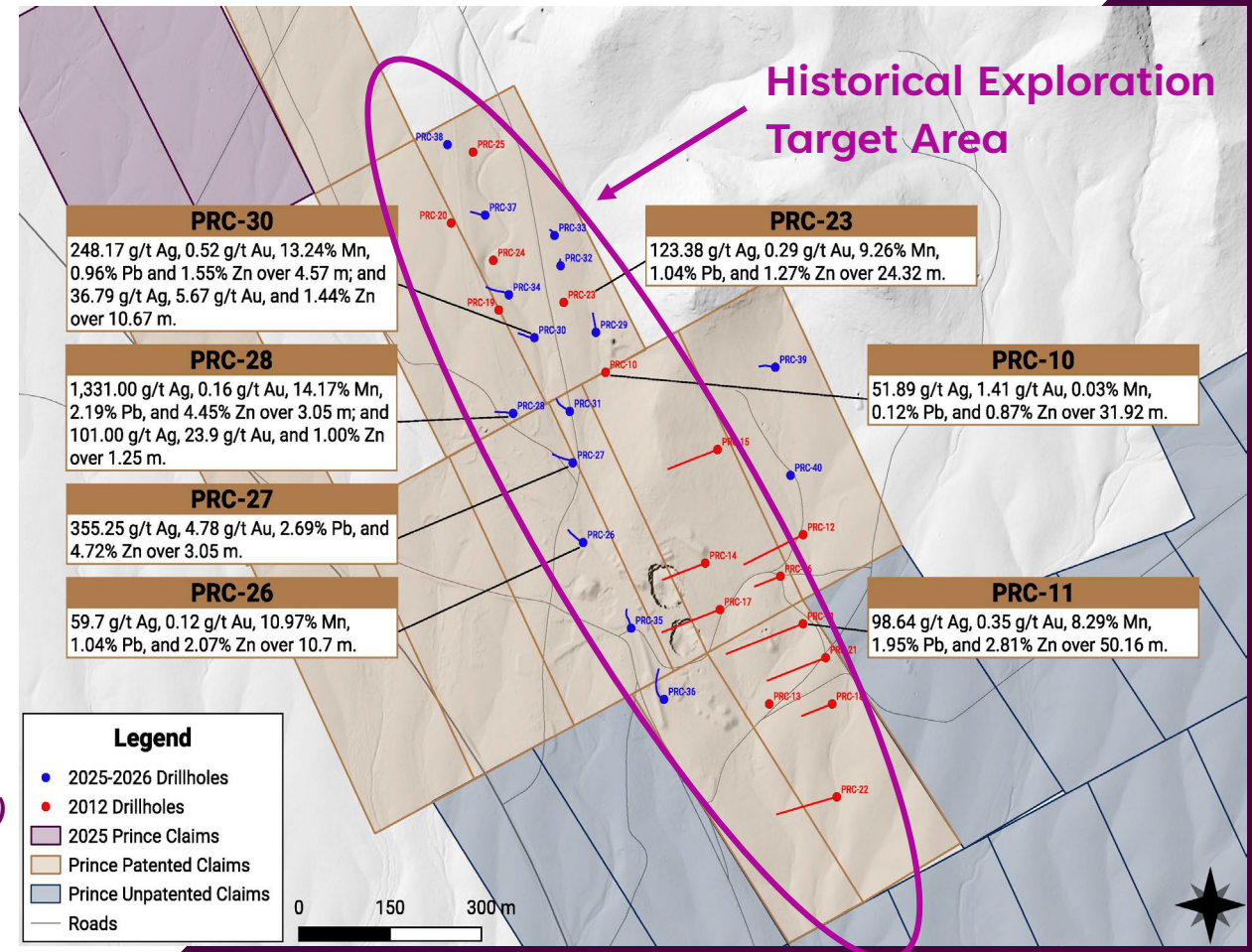
- Includes **248.2 g/t Ag, 13.24% Mn, 0.52 g/t Au @ 4.57 m**

**PRC-27: STRONG THICKNESS FULL OF METALS (207-216 m depth)**

**139.9 g/t Ag, 8.57% Mn, 0.68 g/t Au, 1.48% Pb, 1.06% Zn @ 9.15 m**

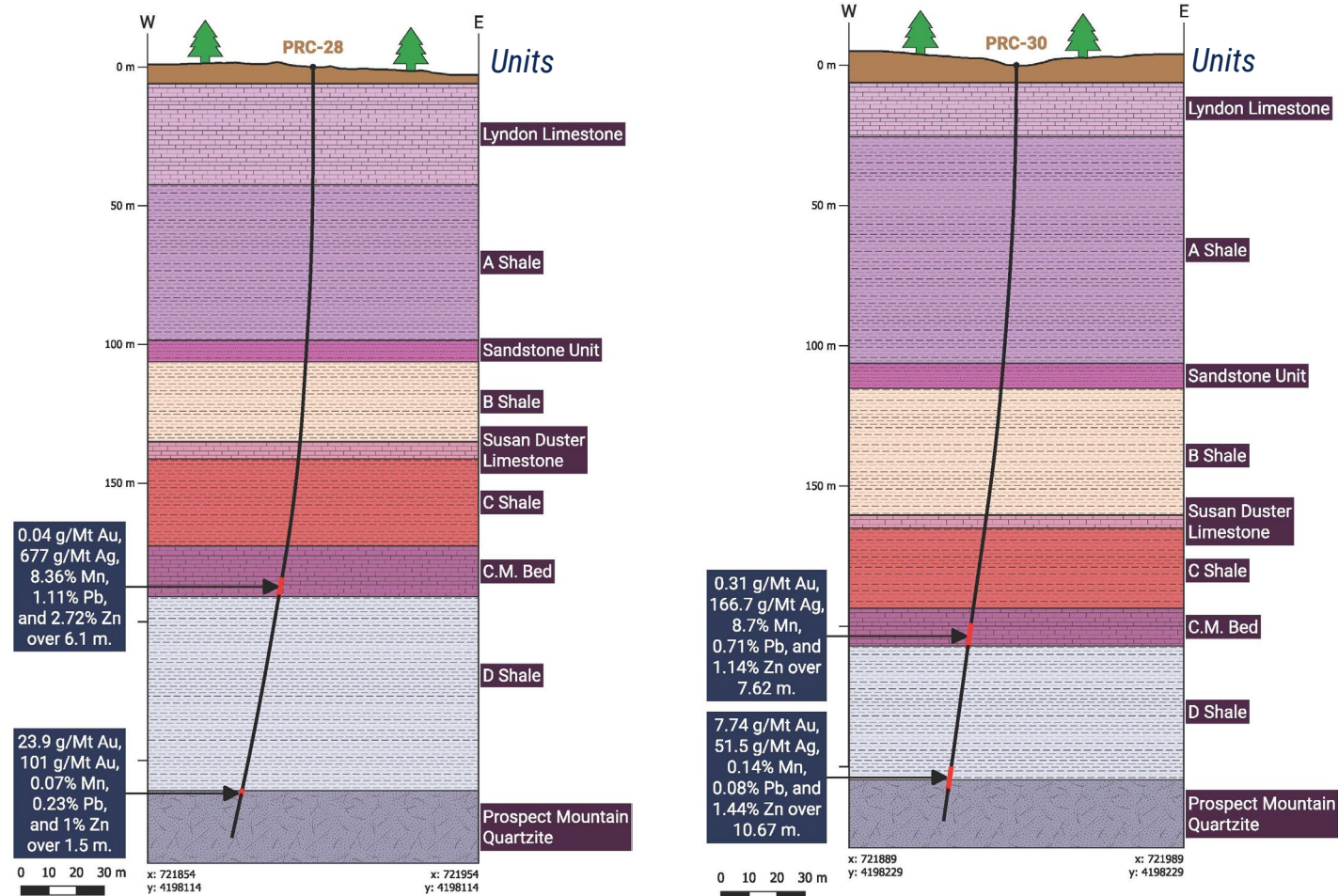
**PRC-26: BROADLY MINERALIZED WITH STRONG MN (216-232 m depth)**

**59.7 g/t Ag, 10.97% Mn, 1.04% Pb, 2.07% Zn @ 10.67 m**



**STRONG AG-AU-MN MINERALIZATION TO-DATE AND FURTHER 2025-26 ASSAYS PENDING**

# CROSS SECTIONS THROUGH STRATIGRAPHIC UNITS



## TARGETING DEEPER UNITS IN 2026

- Past production focused on mining the veins and mantos in the shallow A & B Shale units
- Historically left the deeper CM Bed and Prospect Mountain Quartzite Unit untouched

## FIRST 5 HOLES HIT MULTIPLE UNITS (Released in Jan. 13 2026)

- Holes PRC 28 & 30 pierced the CM Bed and Quartzite units and intersected high silver and gold grades at depth
- Ongoing drill program will continue to test down to ~900-1000 feet (~275–300 metres)

CLEAR PATH TO MRE AND POTENTIAL FOR BULK TONNAGE OPEN-PIT MINING

# DOUBLING OUR LAND POSITION

## LAND POSITION MORE THAN DOUBLED

- Staked ~656 new acres, more than doubling the land package at the Prince Silver Project.

## CLAIMS ADDED ALONG PROVEN MINERAL TREND

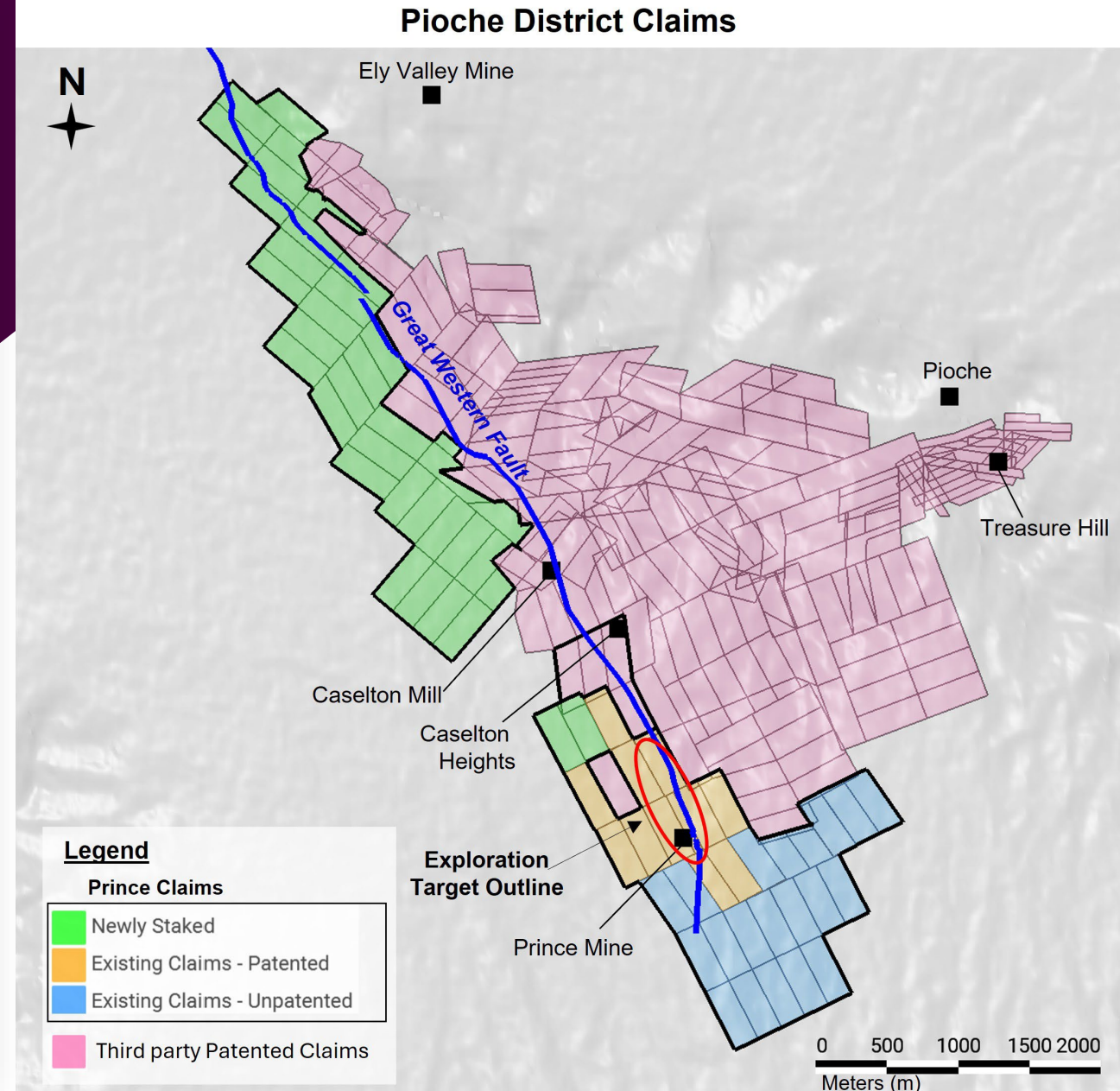
- New claims lie directly along the Great Western Fault corridor, the primary control of known CRD and vein mineralization.

## SECURES KEY MINERALIZED EXTENSIONS

- Expanded land position secures over 7 km of prospective strike length along the mineralized fault system.

## POSITIONS PROJECT FOR RESOURCE GROWTH

- Added ground supports future drill targets, infrastructure site planning, and advancement toward an initial MRE.

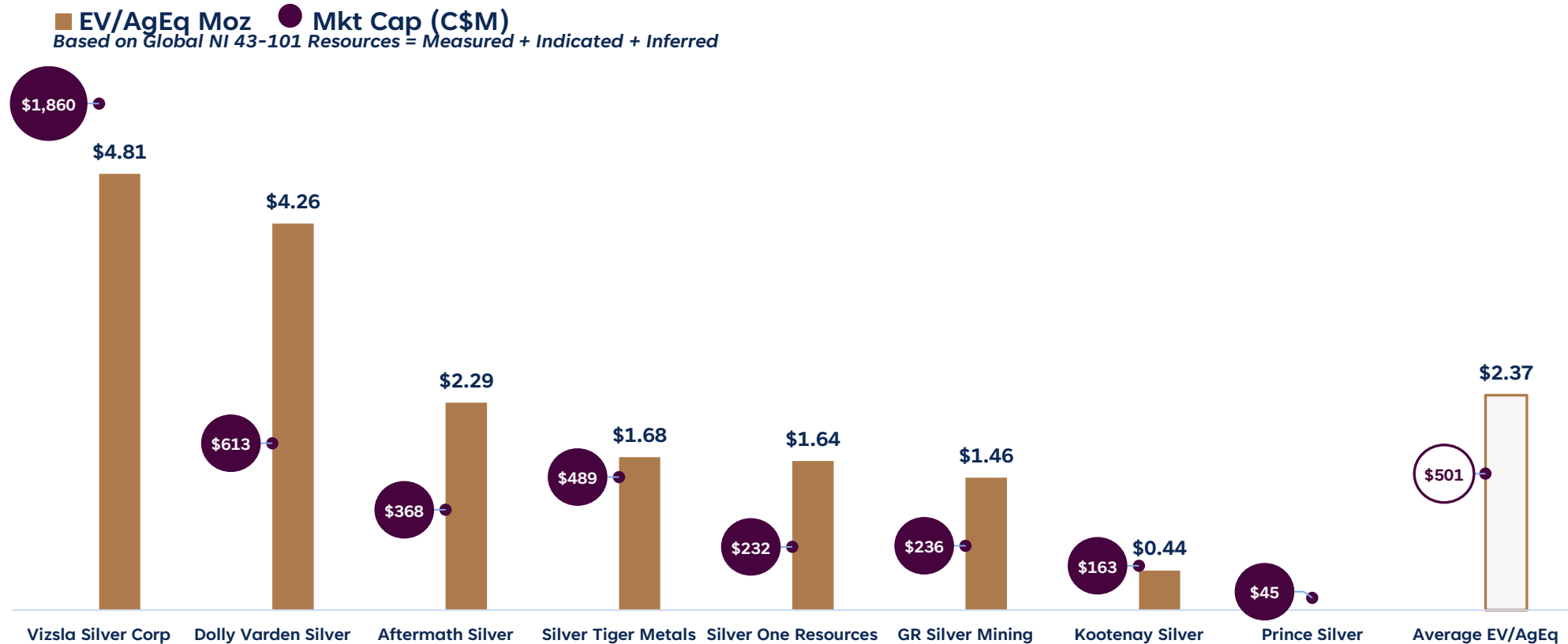


# UNLOCKING POTENTIAL

*What's driving the project forward in 2026?*

Key Catalysts	Q1	Q2	Q3	Q4
<b>PHASE 1 DRILLING WITH 2 RC DRILL RIGS</b> Added 2nd rig in mid-January to boost drilling speeds and results.				
<b>PHASE 1 DRILLING RESULTS</b> Releasing assay results from January – May from 9,000m program.				
<b>PHASE 2 DRILLING PROGRAM</b> Infill, step-out and depth testing to expand mineralized footprint.				
<b>PHASE 2 DRILLING RESULTS</b> Releasing assay results in H2.				
<b>MAIDEN MINERAL RESOURCE ESTIMATE</b> Combine new and historical drill data for an NI 43-101 MRE in Q4.				
<b>METALLURGICAL TEST WORK ONGOING FROM LATE 2025</b> Multi-stage testing is underway with same lab as Aftermath Silver.				

# SILVER DEVELOPERS - EV/AG EQ



**PRINCE'S HISTORICAL EXPLORATION TARGET IS BETWEEN 25-43MT\***

\*Disclaimer: Readers are cautioned that the Exploration Target is not an "inferred", "indicated" or "measured" mineral resource compliant with National Instrument 43-101 ("NI 43-101"). The Exploration Target has been determined based upon 129 historic drill holes totalling 16,606 meters, historic production records including mine level plans and 3D modelling of mineralization and geology. The potential quantity and grade of the Exploration Target is conceptual in nature. There has been insufficient exploration to define a mineral resource and, it is uncertain if further exploration will result in the Exploration Target being delineated as a mineral resource. Source: OmniGeoX Exploration Consultants, April 2024, copy available on the Company's web site - [www.princesilvercorp.com](http://www.princesilvercorp.com)

Footnote: Enterprise Value (EV) calculated as Market Capitalization + Total Debt - Cash (all amounts in C\$ millions). EV/AgEq oz calculated using each company's total global silver-equivalent Mineral Resources (Measured + Indicated + Inferred), where disclosed. Share prices are closing prices in C\$ on January 16, 2026; shares outstanding and cash/debt are from each company's most recent financial statements available as of January 18, 2026. AgEq totals are company-reported and may reflect differing metal prices, recoveries, cut-off grades, and reporting assumptions; comparisons are indicative only.

# U.S. CRITICAL MINERALS ADVANTAGE

The U.S. government has committed to \$30B of support for domestic critical minerals.

Recent examples of US government backed funding to publicly-listed mining companies include:

- **Oct. 7 2025: Titan Mining (TSX: TI)** enters non-binding LOI for **US\$120 M** credit facility from US EXIM under the “Make More in America” initiative to fast-track their natural flake **graphite** feasibility study in **New York**.
- **Oct. 6, 2025: Trilogy Metals (TSX: TMQ)** secures **US\$35.6 M** from **US Department of Defense (DOD)** for a 10% stake in their **Cu-Zn-Pb-Co** project in **Alaska**.
- **June 2, 2025: Ucore Rare Metals (TSXV: UCU):** receives non-repayable **US\$22.4M** funding from DOD to fund development of their **rare earth** separation technology to support the domestic rare earth supply chain.
- **Sept 20, 2024: South32 (ASX: S32)** receives **US\$166 M** from **US Department of Energy (DOE)** for development of their **Zn-Pb-Ag-Mn** Project in **Arizona**.

THE PRINCE PROJECT HOSTS THE FOLLOWING CRITICAL MINERALS: AG, ZN, PB, MN, AND CU

# STAMPEDE GAP PROJECT

*A District-Scale Cu-Mo Porphyry and Skarn System + Distal Pb-Zn-Ag-Au System*

## EXTENSIVE PORPHYRY SYSTEM

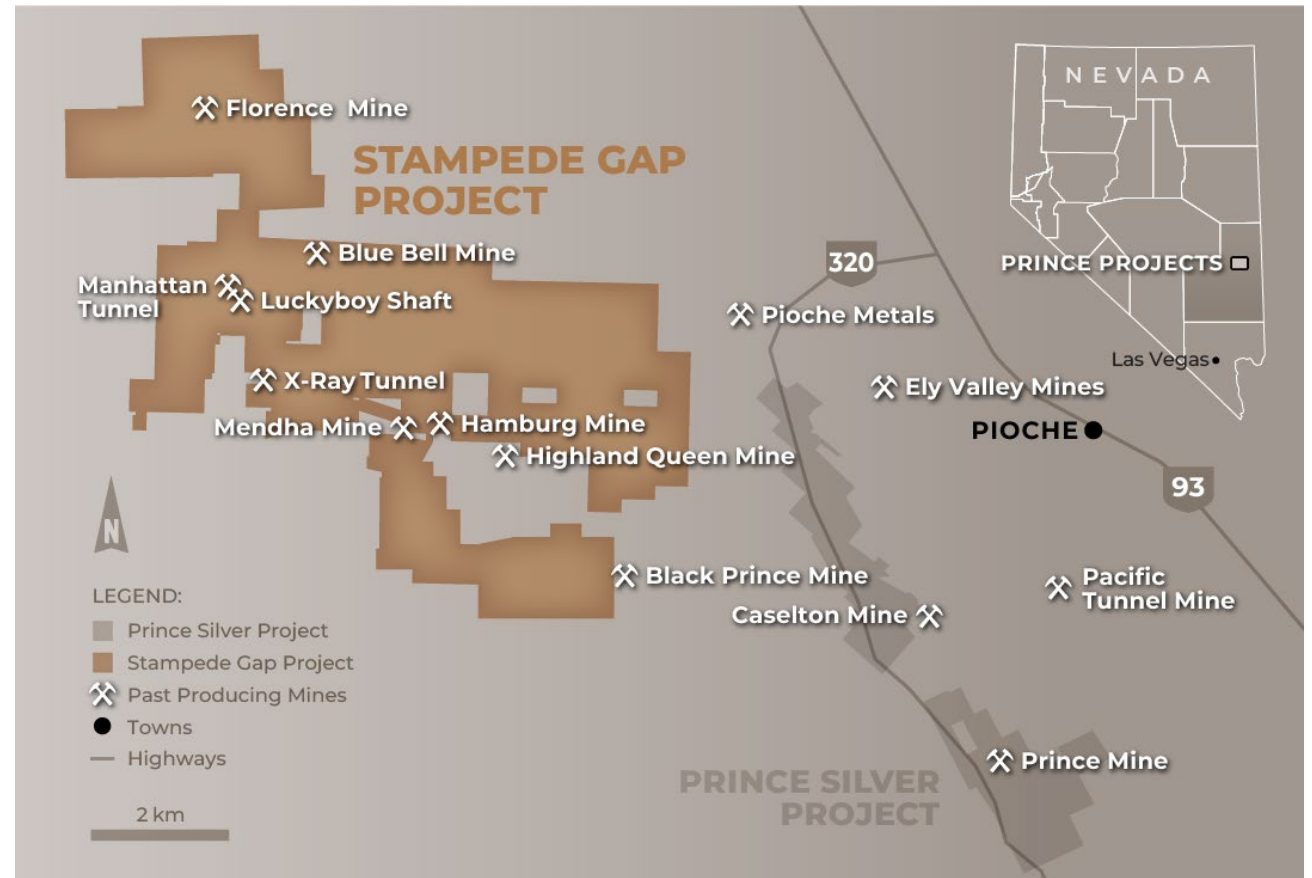
- The Stampede Gap Cu-Au-Mo Project is an underexplored porphyry system that has the **hallmarks of a large-scale copper-molybdenum deposit**.
- Evidence suggests the **presence of a significant porphyry centre**, supported by geophysical anomalies, surface alteration, and encouraging mineralization at depth.

## KEY LOCATION

- The project is located approximately **150 km south of KGHM's Robinson Cu-Au-Ag-Mo Mine**, a well-known porphyry copper-gold deposit.

## FUTURE EXPLORATION AND DEVELOPMENT

- The project's proximity to current and past producing mines, and the Prince Project provide a path to future development, while Prince remains the short term 'low hanging fruit'.



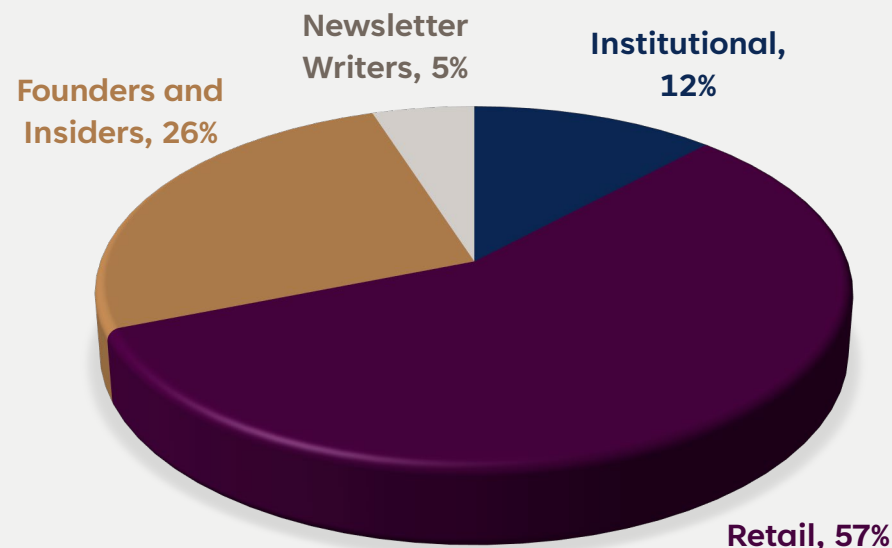
# CAPITAL STRUCTURE

As of April 10, 2026

Shares Issued & Outstanding	58.9 million
Stock Options (Avg. \$0.50/share)	3.8 million
Warrants (Avg. \$0.61/share)	13.6 million*
Contingent Rights	8.5 million
Fully Diluted Balance	84.8 million
Cash	C\$8 million
Debt	C\$0
Market Cap	C\$40M

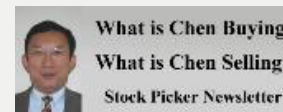
\* Warrants Breakdown: 1.4M @ \$0.60 until Sep. 12, 2026  
7.7M @ \$0.40 until Dec. 23, 2026  
1.1M @ \$0.95 until Apr. 27, 2027  
3.4M @ \$1.00 until Feb. 11, 2028

## OWNERSHIP



COVERAGE

GoldNewsletter



# MANAGEMENT & DIRECTORS



**DEREK IWANAKA**  
*CEO & Director*

Mr. Iwanaka is a mining-sector executive with over 23 years of investor relations, corporate development, and capital markets experience. He has supported 20+ transactions and helped raise more than US\$100 million, including one of Canada's first ATM financings. He previously held senior roles at BeMetals Corp. and First Mining Gold Corp., contributing to strategic acquisitions, project advancement, and significant market-cap growth.



**RALPH SHEARING**  
*President & Director*

Former CEO and Founder of Luca Mining and, current CEO of Goldgroup Mining, a growing gold producer in Mexico.

Ralph over past 39 yrs has held senior executive positions with public junior mining and exploration companies, which he's guided through the exploration, initial development & construction and pre-production phases.

**DR. ROBERT WRIXON**  
*Independent Director*

Managing director of Starboard Global Ltd, a Hong Kong based project incubator and VC firm. Dr. Wrixon is the Director of the company vending the Prince Mine CRD and Stampede Gap projects into Prince Silver.

**HARRISON MATSON**  
*Consultant Geologist*

Vice President of the company vending assets into the company's Prince Silver CRD Project. Exploration successes include the Zonia oxide copper deposit in Arizona, and the Prince carbonate-hosted replacement deposit (Ag-Au-Zn-Pb-Mn) in Nevada.

**ROB SCOTT CPA, CA, CFA**  
*CFO & Corporate Secretary*

Mr. Scott's professional experience has helped raise over \$200M in equity with past and current executive and board positions with TSX-V issuers including: Great Bear Resources, ValOre Metals, Riverside Resources, Capitan Silver, and First Helium.

**MARCO MONTECINOS**  
*Independent Director*

Mr. Montecinos has over 40 years of mineral exploration experience across the Americas, including a key role in the three-million-ounce Marlin Gold discovery, multiple gold discoveries, and current roles as VP Exploration at Gunpoint Exploration and US Critical Metals, as well as President of Tigren, Inc.

**DARRELL RADER**  
*Independent Director*

Mr. Rader is the President and CEO of Minaurum Gold Inc., a silver explorer in Mexico. He has directly raised over \$150 million for mineral exploration and development and has strong relationships with institutional investors and bankers. He founded Defiance Silver Corp., a silver developer, and previously was the head of Corporate Development at IMPACT Silver Corp.

# AN UNDERVALUED SILVER ASSET

## LOW RISK TIER 1 MINING JURISDICTION



In the mine-friendly "Silver State" of Nevada, a recognized region for world-class Ag-Au projects.

## LEVERAGED TO CRITICAL MINERALS



Prince offers rare, U.S.-based leverage to 5 critical and strategic minerals: silver, gold, zinc, lead, and manganese

## DISTRICT PLAY POTENTIAL



Prince's growing land position provides long-term untapped opportunities in a proven high-grade silver district.

## CATALYST RICH



Drilling with 2 rigs underway and results pending, initiated metallurgical studies, plus an upcoming MRE, all contributing to potential significant re-ratings.

# CONTACT US

Derek Iwanaka, CEO & Director

[info@princesilvercorp.com](mailto:info@princesilvercorp.com)  
[princesilvercorp.com](http://princesilvercorp.com)



CSE: PRNC OTCQB: PRNCF FRA: T13

